

- | | |
|------------------------|--------------------|
| 1. Trail Manos | 8. Stillwell |
| 2. Blank Flag | 9. Prime Hydration |
| 3. SCC Slick | 10. Pro Pedal |
| 4. Bicycles of Phoenix | 11. MMC |
| 5. Reviner | |
| 6. Cactus Cup | |
| 7. ACA | |

3 PORTOS IN FOUR PEAKS LOT
(off map)

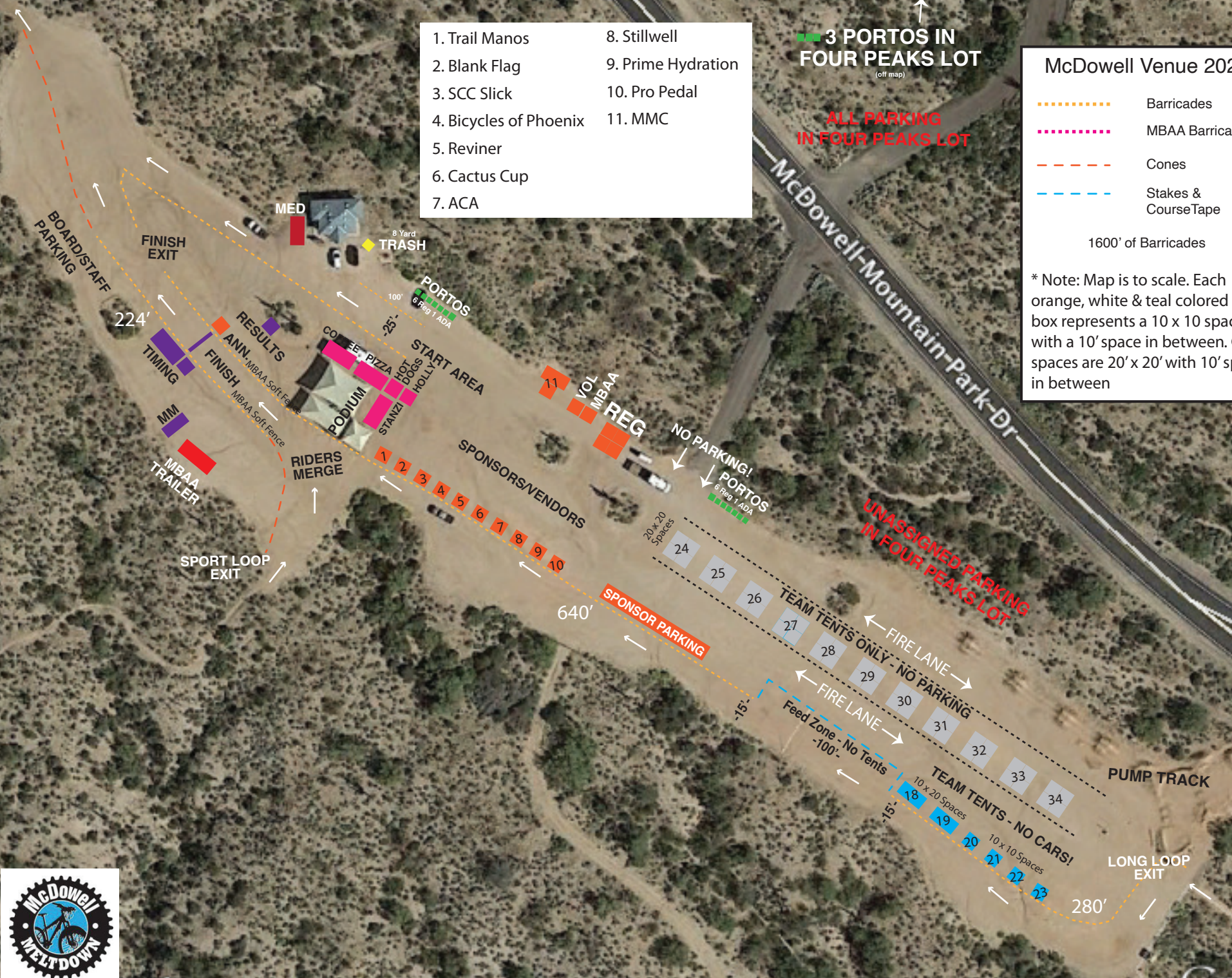
ALL PARKING IN FOUR PEAKS LOT

McDowell Venue 2024

- Barricades
- MBAA Barricades
- Cones
- Stakes & Course Tape

1600' of Barricades

* Note: Map is to scale. Each orange, white & teal colored box represents a 10 x 10 space with a 10' space in between. Gray spaces are 20' x 20' with 10' space in between



274 ft